



Product model: Runner 250 R version  
Software: 250GPS\_version1.2.bin

Date	Update history	Software download
2015-10-20	Runner 250 R version 1.2 program file Runner 250 R version configuration file	250GPS_version1.2.bin 250GPS 配置_V1.2.mws

### Configuration change description



Note:

1. Configuration changes required to use FlyConfig Walkera tools
2. Major improvements: adjust the mode switch position and increase the flight mode (see note)
3. The upgrade must be upgraded with the preparation of documents

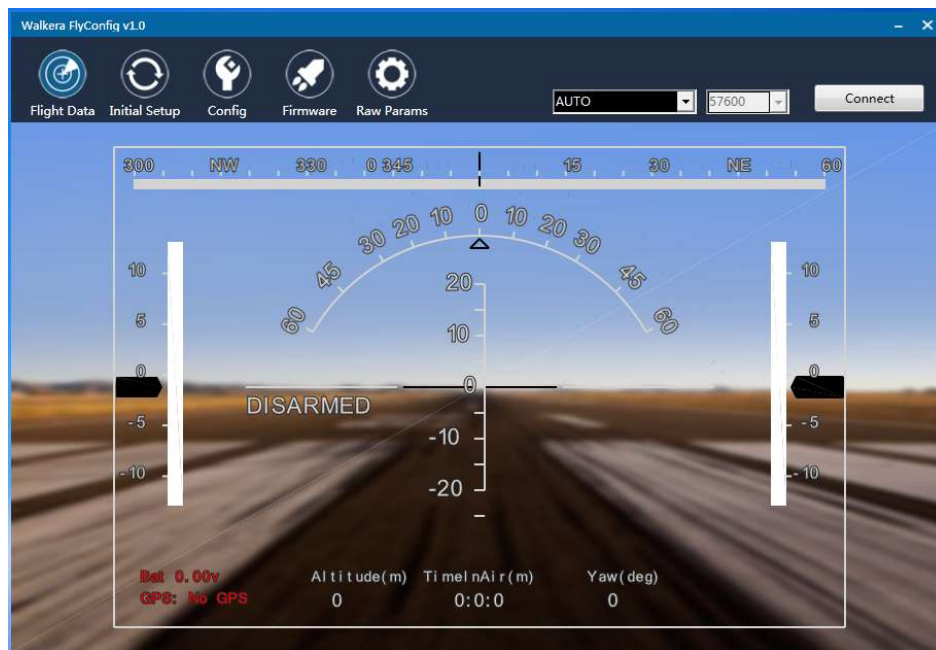
Step:

一. Upgrade program

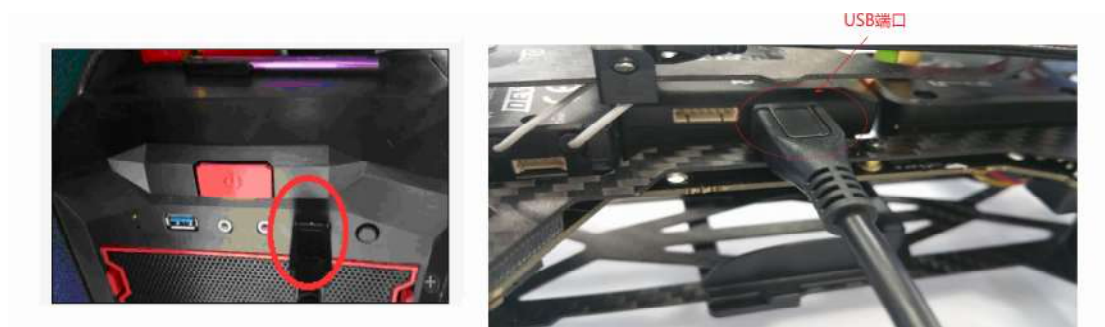
1. in the official website to download the FlyConfig Walkera software package; After decompression click Install Software 

2. Click on the desktop  Shortcut icon to open the software, Select the required language. See below, Then click  Icon entry interface





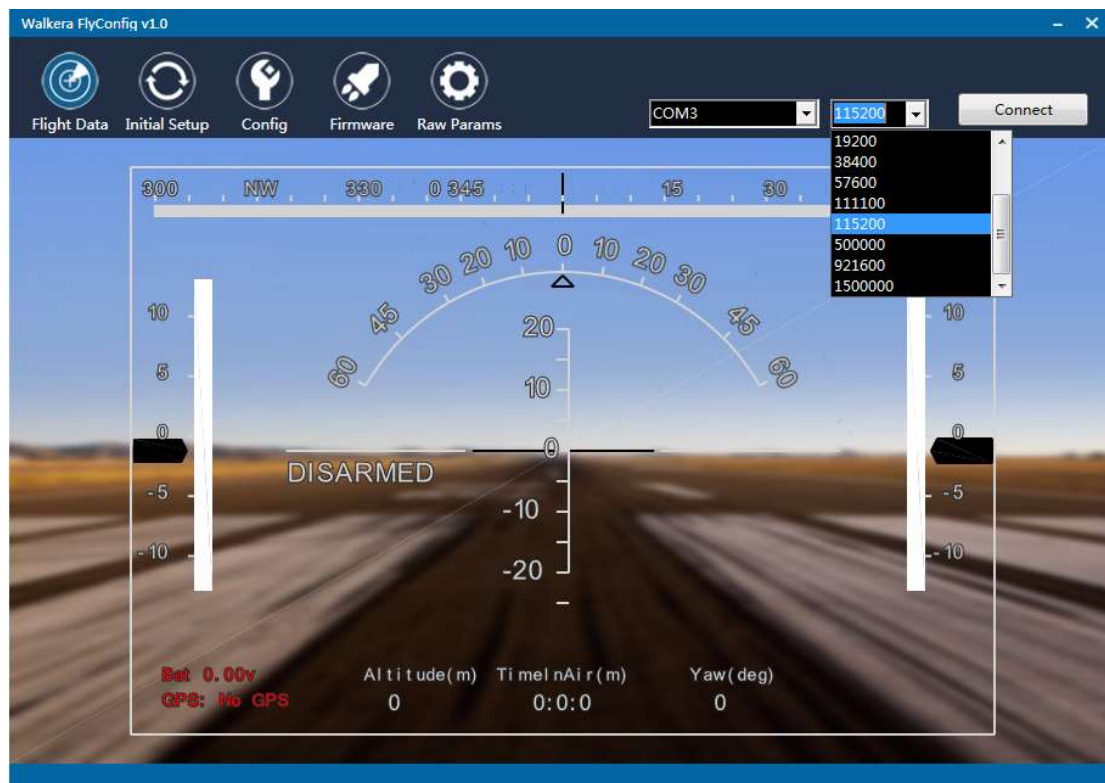
3 Insert one end of the USB line into the USB port of the PC, The other end is inserted into the USB port of Runner 250,



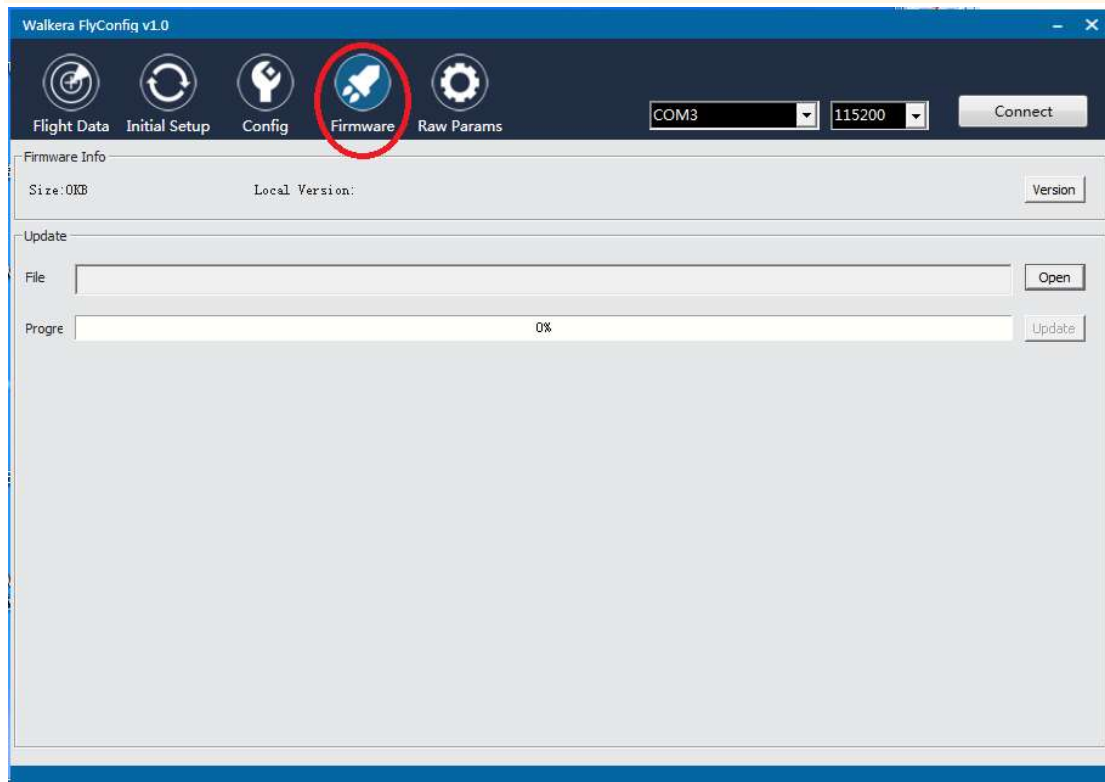
4. Click the AUTO item, select the COM port that is connected to the, ((see 3));



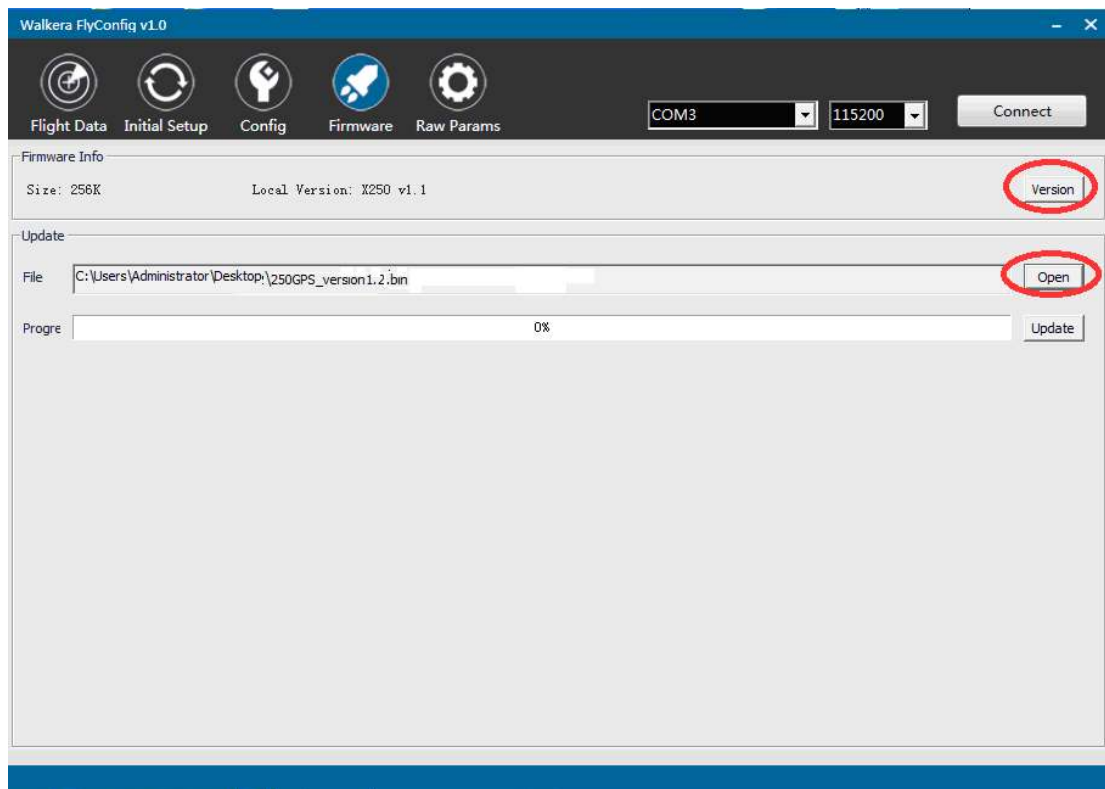
Click on the baud rate, (see 4), 115200



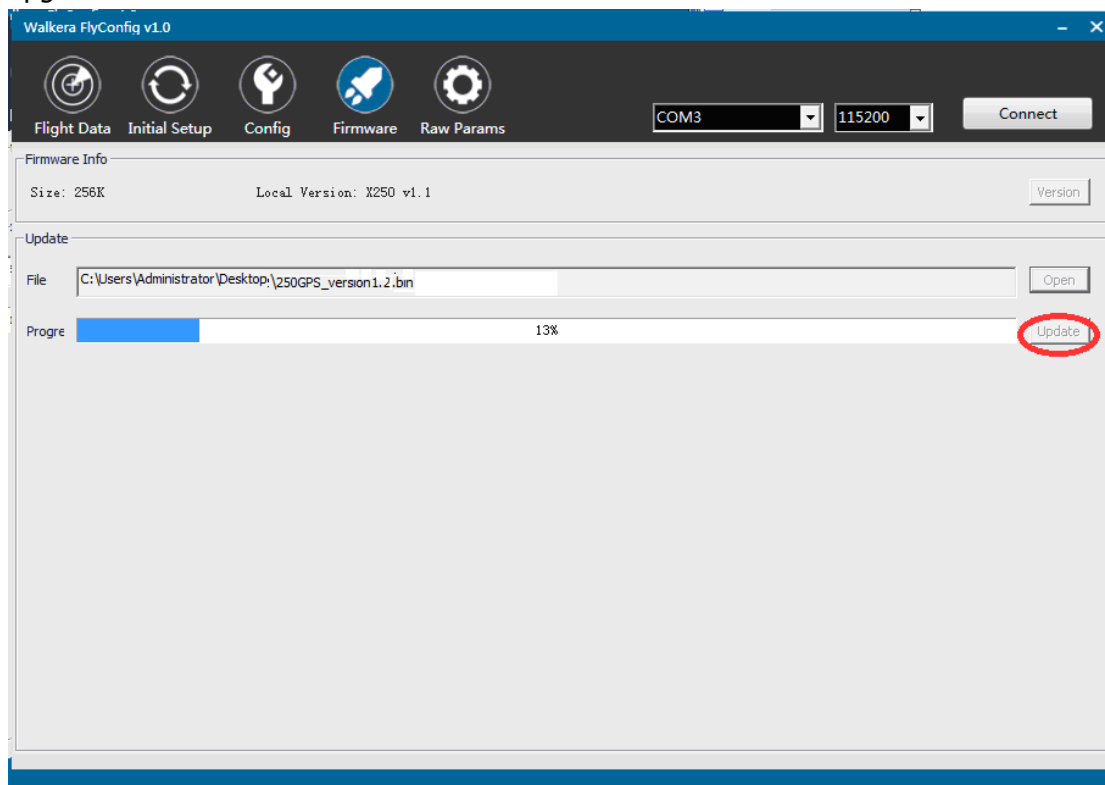
Click the firmware upgrade, the upgrade interface is as follows:



Click the browse file transferred to upgrade BIN




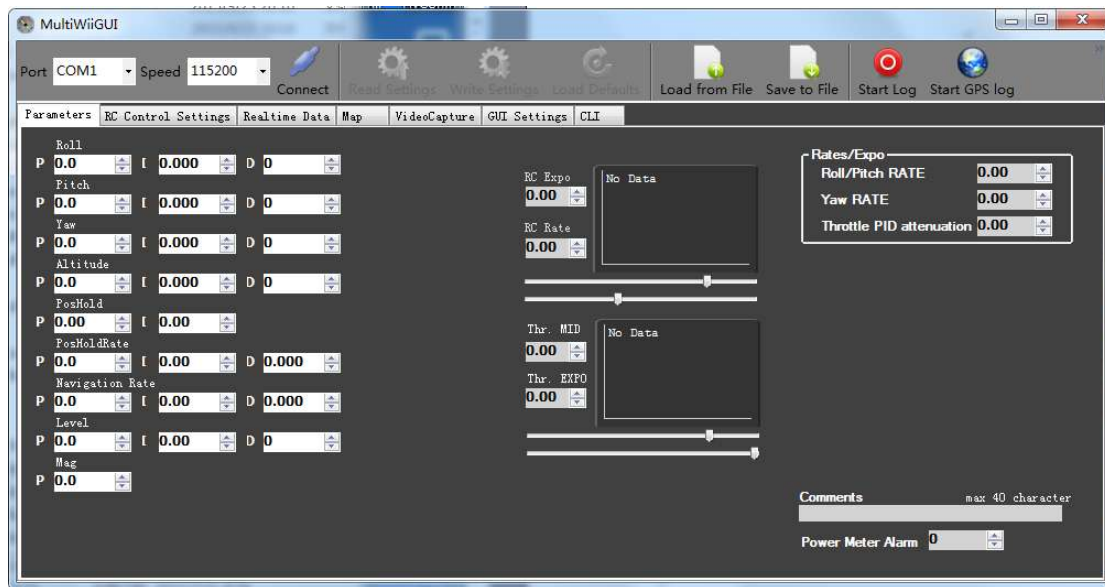
Click the upgrade, the progress bar, see the following figure, the progress of the 100% to upgrade



Such as the upgrade of the middle of the failure can be repeated steps

## 二. Upgrade configuration file

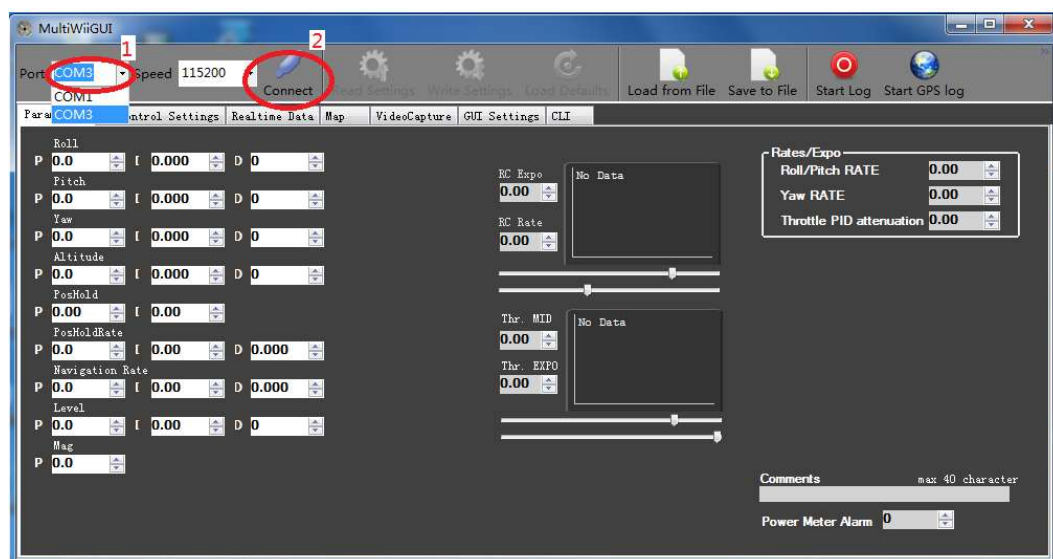
1. Download the "MultiWiiWinGUI" software; Open the folder, click the shortcut icon  MultiWiiWinGUI, Open tuning software, See below



2. Insert the USB line into the USB port of the PC, The other end is inserted into the USB port of Runner 250. And connected with the remote control

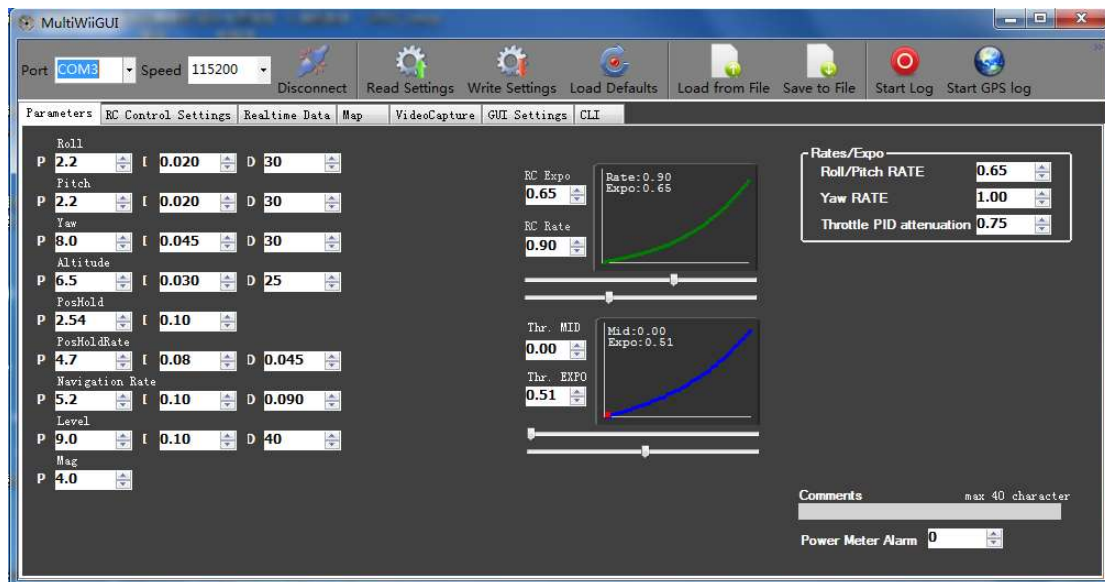


3. Click Port, Select a connected COM port, (See 1); The baud rate is 115200. Click on the Connect connection, the flight control (see 2)

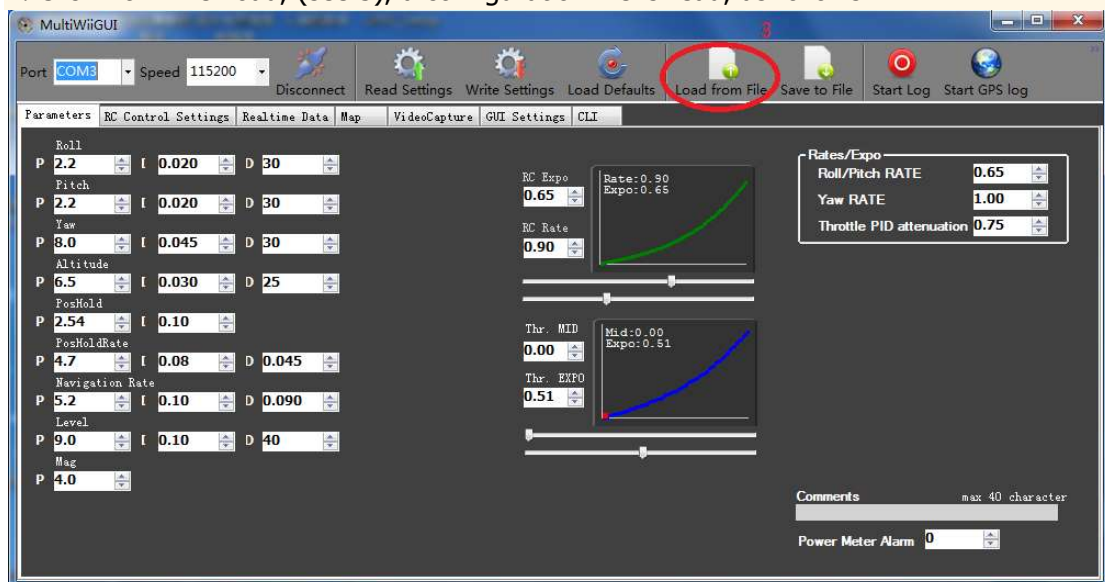


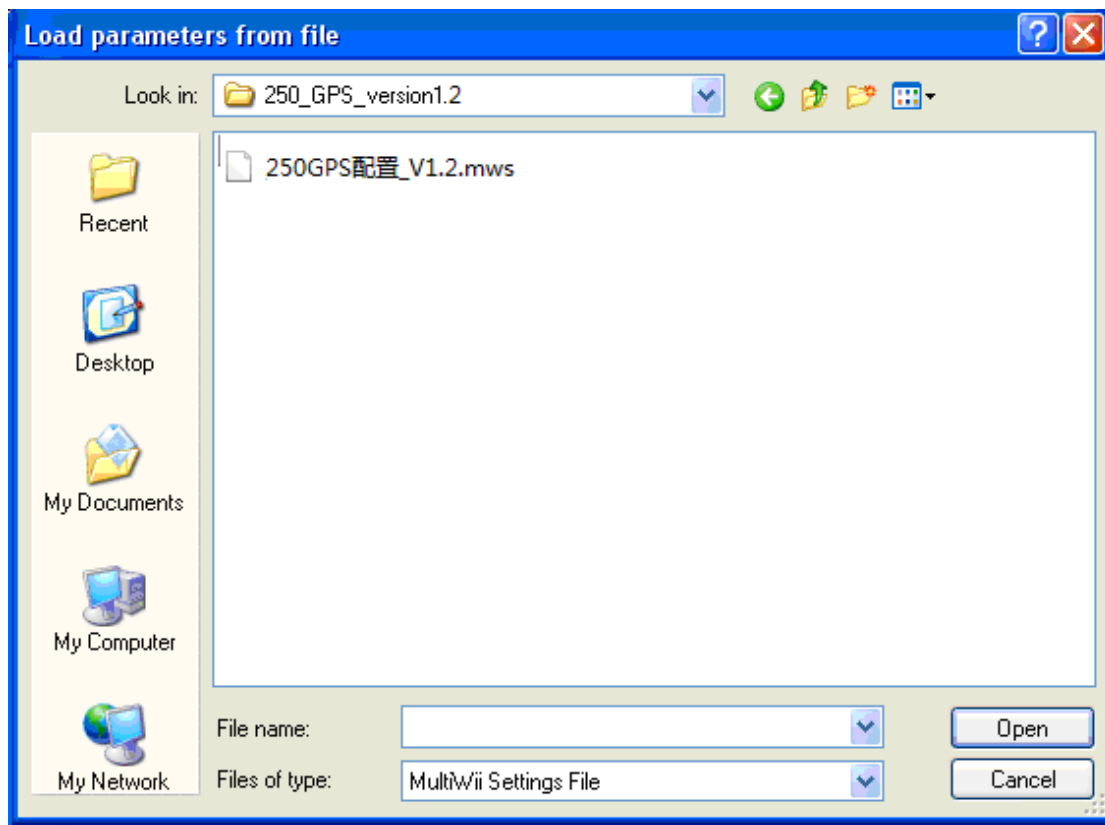
After connecting flight control interface will automatically read the flight control configuration parameters, see below



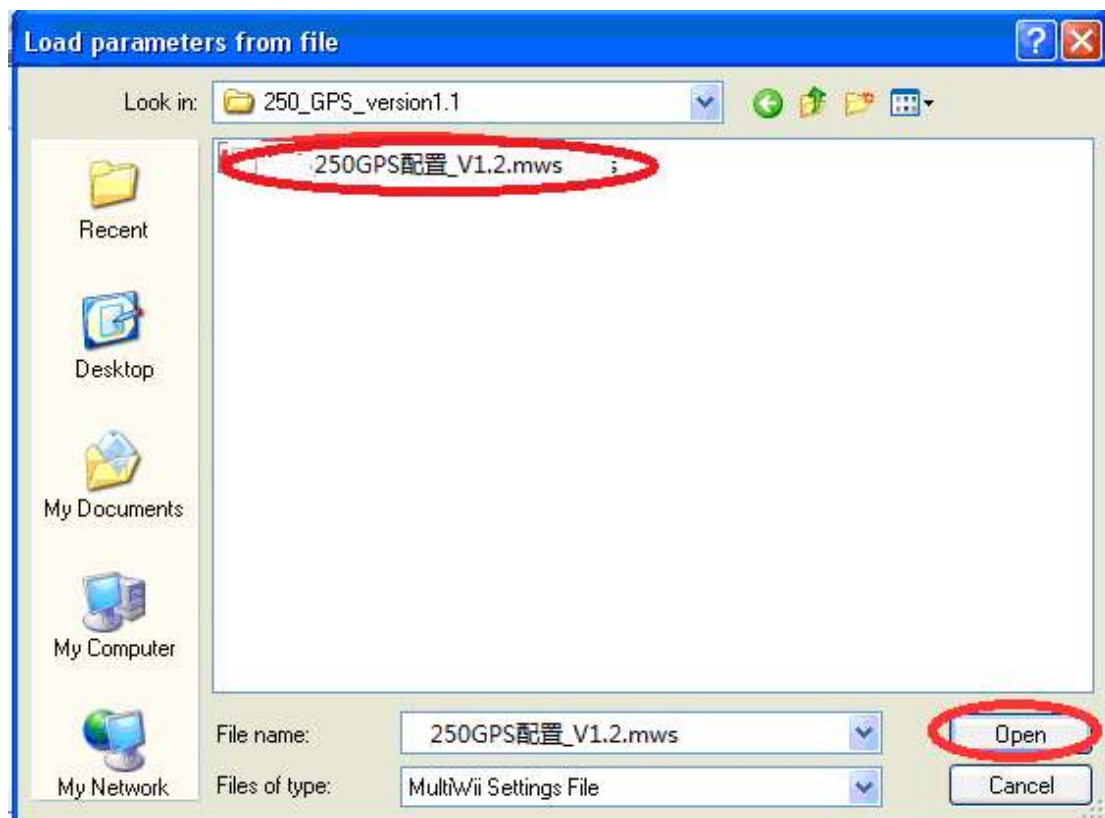


4. Click from File Load, (see 3), a configuration file is read, as follows:

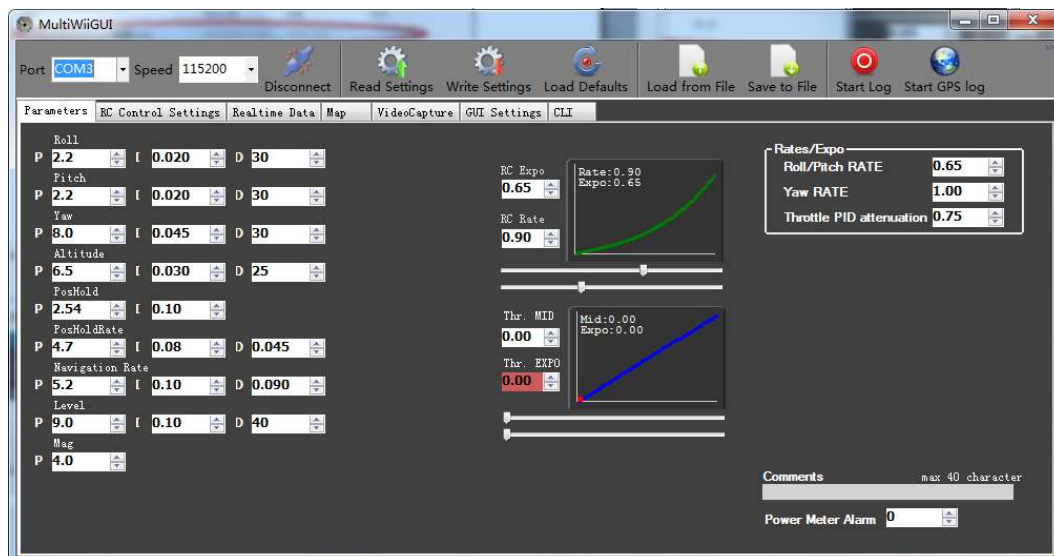




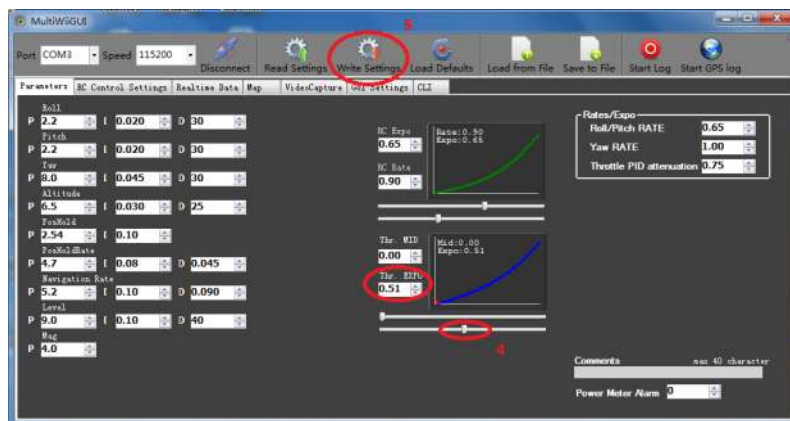
5. Click the upgrade configuration file, and click on the following chart



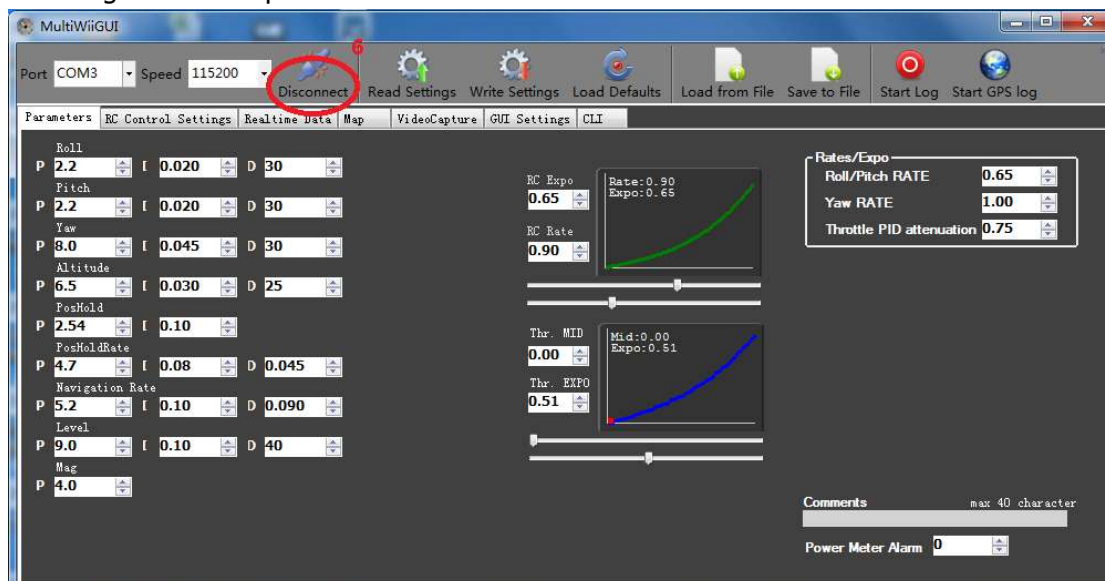
Have read the configuration file interface see figure below



6 Adjust the slider 4, so that the red box in figure 0.51. Click Settings. Write to write configuration parameters.



7. Configuration complete click Disconnect exit link.



**Reminder:**

**Before flying, check the control of the aircraft is normal.**

**If you want to adjust the other configuration parameters, need to keep the**



**factory configuration parameters, so that there is not normal to adjust the parameters in the factory**